

World Trade Center Steel Anomalies & The “Temperature Gap”



Various photos were taken at Ground Zero that identified 4-inch thick steel columns that appear to have been sliced by a high temperature cutter.*

Iron-rich microspheres taken from samples was formed on WTC steel (Iron melts at ~1538C (2600F)).*

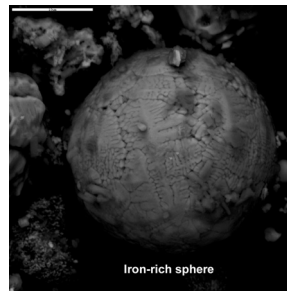
Evaporated lead (lead oxide) coating was found on dust fibers (1749C, 3180F).*

Red chips (indicating Iron Oxide) in North Tower dust found to contain Iron, Silicon, Aluminum, Potassium and Oxygen – (same signature as spheres, commercial thermite)*

Molten steel was reported by numerous Ground Zero workers with reports it was “like like a foundry”.*

A thermal map of Ground Zero shows hotspots on the surface of the rubble that were above 700 degrees Celsius. After another five days of cooling and despite being sprayed with water, they were still above the melting point of aluminium.

***These events require temps of at least 1,000 degrees Fahrenheit above the maximum achievable by the jet-fuel carbon based fires apparent in the Towers on 9/11.**



Don't forget!

**NIST reported
“no evidence that any of
the samples reached
above 600 degrees
Celsius (1,112F).” !!**

