

Numerous Characteristics of Controlled Demolition on 9/11—WTC 1 & 2

Total/Global Collapse



As photos show, both 110-storey buildings ended up as piles of rubble around 7 stories high.

Given WTC 1 & 2 had 47 core and 240 perimeter columns, which were massive steel box

columns, how can this global collapse occur due to gravity alone?

No official account explains this anomaly, the original pancake collapse theory was retracted after it was correctly pointed out that the large core columns (4 inches thick at the base) would still be seen standing.

Vertical and Symmetrical Collapse



It is important in a controlled demolition that a structure comes down in, or at least close to, its footprint so as not to harm nearby buildings.

The official account relies on us accepting that the columns were weakened sufficiently by the aircraft impact and core damage however — even if this were plausible — we are required to accept that all 287 columns failed at the same time to even initiate this vertical collapse.

South Tower Dipping and Disintegration



During the South Tower collapse we witness an incredible event that again defies the laws of physics if we are to accept that the building's collapse was caused by anything other than controlled demolition.

At the start of the collapse the top 34 or so floors above the plane impact area begin tipping towards the corner of most damage but then magically reverse direction, subsequently disintegrating. The law of conservation of angular momentum states that a solid object in rotation will continue to rotate at the same speed unless acted on by torque. The top of the South Tower should have therefore fallen far outside the building's footprint.

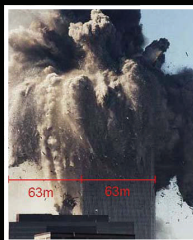
North Tower Antenna Drop



As videos show, the transmission tower on top of the North Tower begins downwards slightly before the exterior wall moves. This suggests that the building's core steel columns gave way first.

NIST again chooses to ignore this anomaly which, given the most plausible explanation in that that the core columns were removed using carefully placed explosive charges, is hardly no surprise.

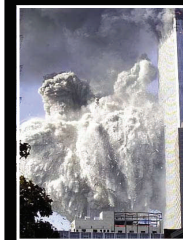
Horizontal Ejections of Pieces of Steel



As photos and videos illustrate, pieces of the perimeter wall were thrown laterally in all directions up to 600 feet, with pieces of aluminium cladding reaching a distance of 700 feet. Blast waves also broke hundreds of windows in buildings over 400 feet away.

According to NIST only vertical gravitational energy was available and again they ignore this anomaly which would require many times this amount of energy. Thick clouds of pulverised concrete were ejected in the first two seconds when motion was only a few feet per second!

Pulverisation and Dust Clouds



Another officially unexplained feature of the collapses is that virtually everything except the steel — the concrete, desks, computers, windows, etc — was pulverised into dust, forming huge clouds that covered New York.

Whilst the gravitational energy could account for concrete breaking into small pieces, again the energy needed to pulverise the concrete and other materials would require energy many times that applied by gravity.

In total, there were around 11 observable events on 9/11 that are characteristics of controlled demolition. Covered elsewhere on display is information relating to the immense heat (including molten metal at Ground Zero) as well as the many ignored eyewitness testimonies.